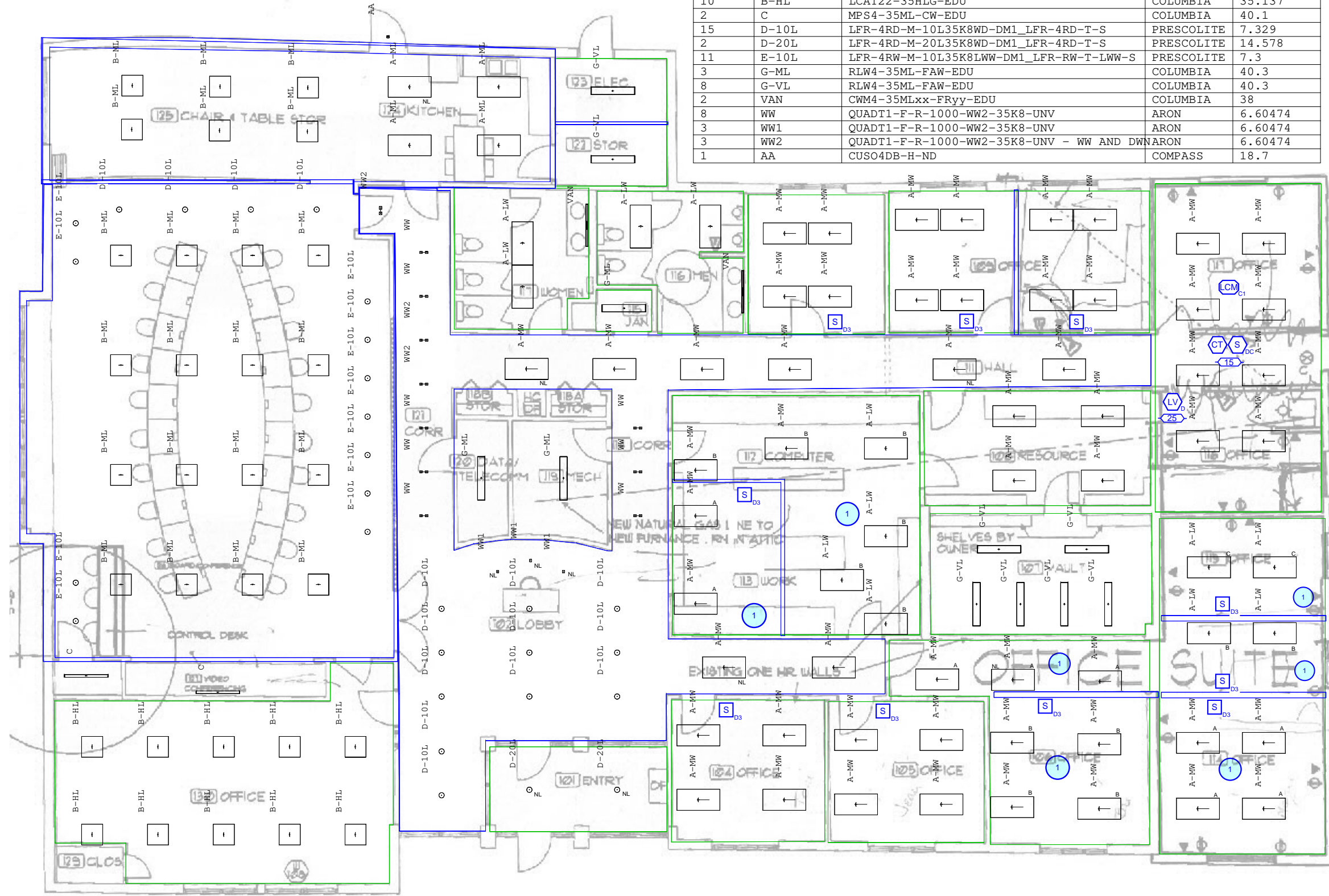


Qty	Label	Description	Tag	Lum. Watts
55	A-MW	LCAT24-35MWG-EU	COLUMBIA	30.2
12	A-LW	LCAT24-35LWG-EU	COLUMBIA	36.1
4	A-ML	LCAT24-35MLG-EDU	COLUMBIA	36.01
22	B-ML	LCAT22-35MLG-EDU	COLUMBIA	25.819
10	B-HL	LCAT22-35HLG-EDU	COLUMBIA	35.137
2	C	MPS4-35ML-CW-EDU	COLUMBIA	40.1
15	D-10L	LFR-4RD-M-10L35K8WD-DM1_LFR-4RD-T-S	PRESCOLITE	7.329
2	D-20L	LFR-4RD-M-20L35K8WD-DM1_LFR-4RD-T-S	PRESCOLITE	14.578
11	E-10L	LFR-4RW-M-10L35K8LWW-DM1_LFR-RW-T-LWW-S	PRESCOLITE	7.3
3	G-ML	RLW4-35ML-FAW-EDU	COLUMBIA	40.3
8	G-VL	RLW4-35ML-FAW-EDU	COLUMBIA	40.3
2	VAN	CWM4-35MLxx-FRyy-EDU	COLUMBIA	38
8	WW	QUADT1-F-R-1000-WW2-35K8-UNV	ARON	6.60474
3	WW1	QUADT1-F-R-1000-WW2-35K8-UNV	ARON	6.60474
3	WW2	QUADT1-F-R-1000-WW2-35K8-UNV - WW AND DWN	ARON	6.60474
1	AA	CUSO4DB-H-ND	COMPASS	18.7



3 FLOOR PLAN  
 DC 1/2/10  
 RE: AI  
 POWER PLAN

- General Notes:**
- Provide unswitched constant hot to all "NL" light fixtures.
  - Run additional wiring from newly added wall occupancy sensor to newly installed fixtures for fully functional 0-10v dimming protocol.
  - Run additional wiring from new DLM Room Controller in Office 116/117 to all fixtures for fully functional 0-10v dimming protocol.
  - Connect all WattStopper control components together using provided WattStopper preterminated CAT5 Cables in Office 116/117

- Key Notes:**
- 1 Building wiring needs to be adjusted to account for new switching pattern. Provide new wall plates as required. See plans for new switching scheme.