

# RECLAMATION

*Managing Water in the West*

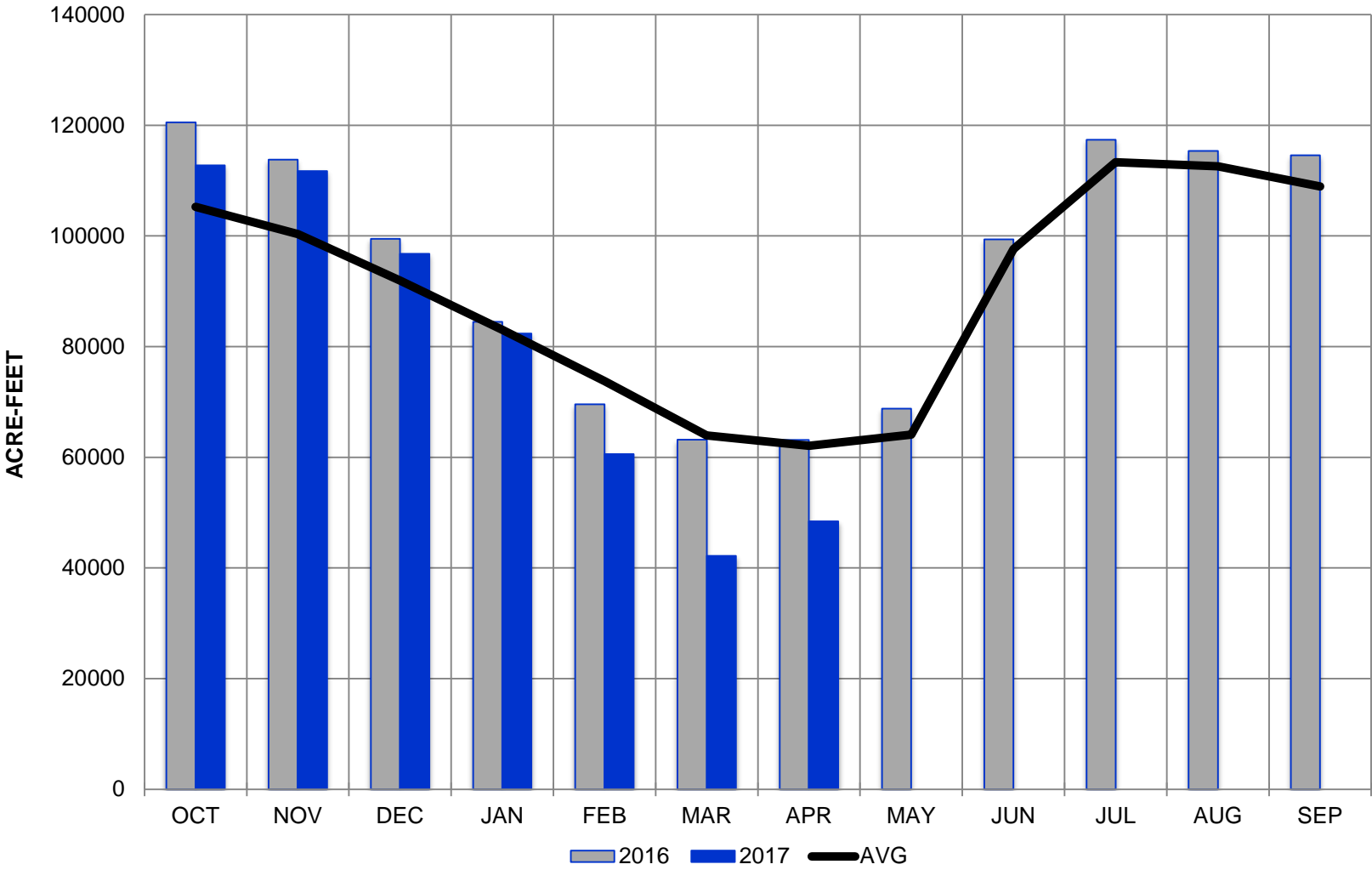
## As of April 16, 2017

- 239,733 a/f stored in Pueblo
- 156,571 a/f of Project water
  - 33,832 a/f of excess capacity water
  - 49,042 a/f of winter water
- 88,802 a/f of Project space in Pueblo
- 69,263 a/f of Project space in Twin & Turquoise

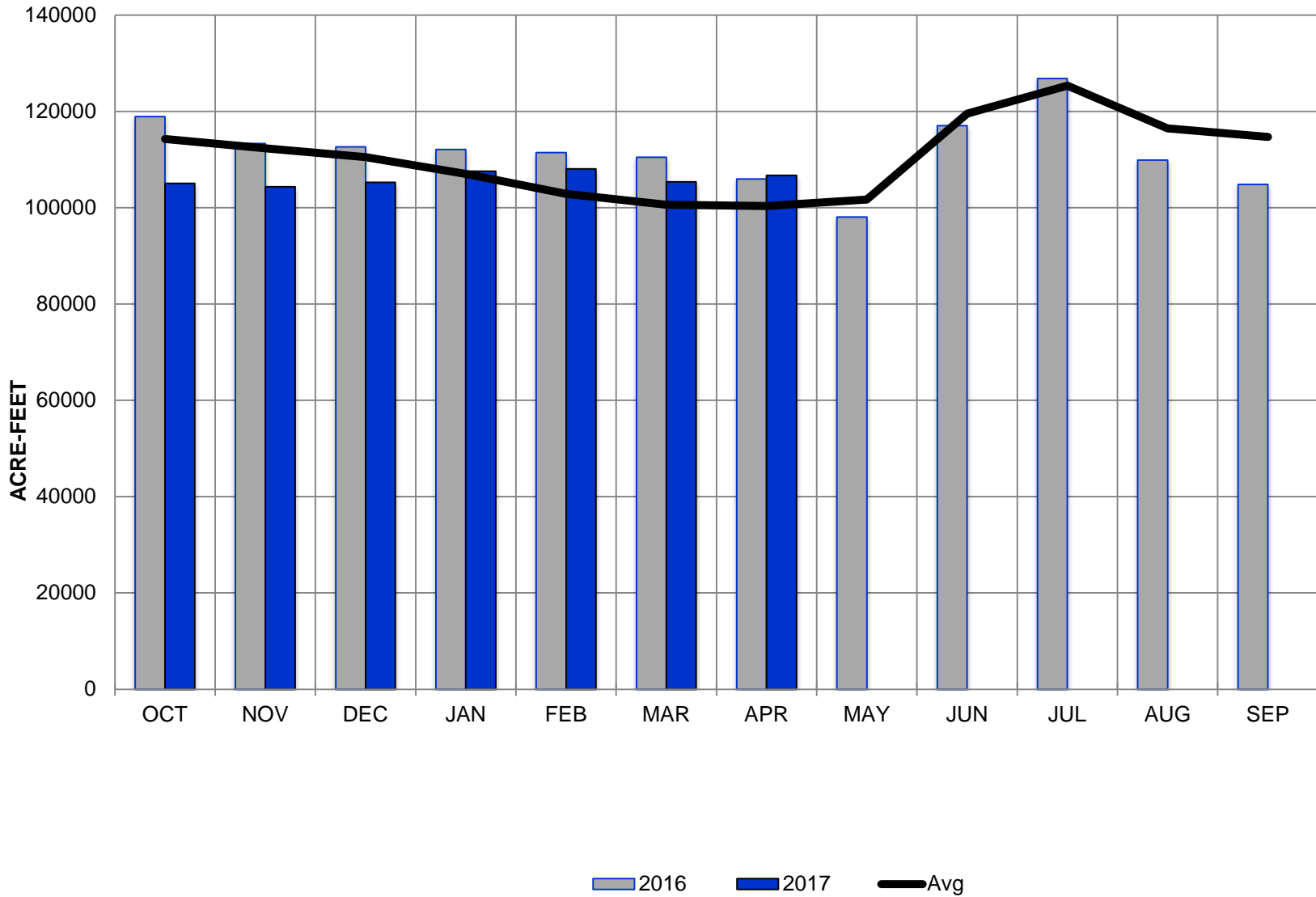


U.S. Department of the Interior  
Bureau of Reclamation

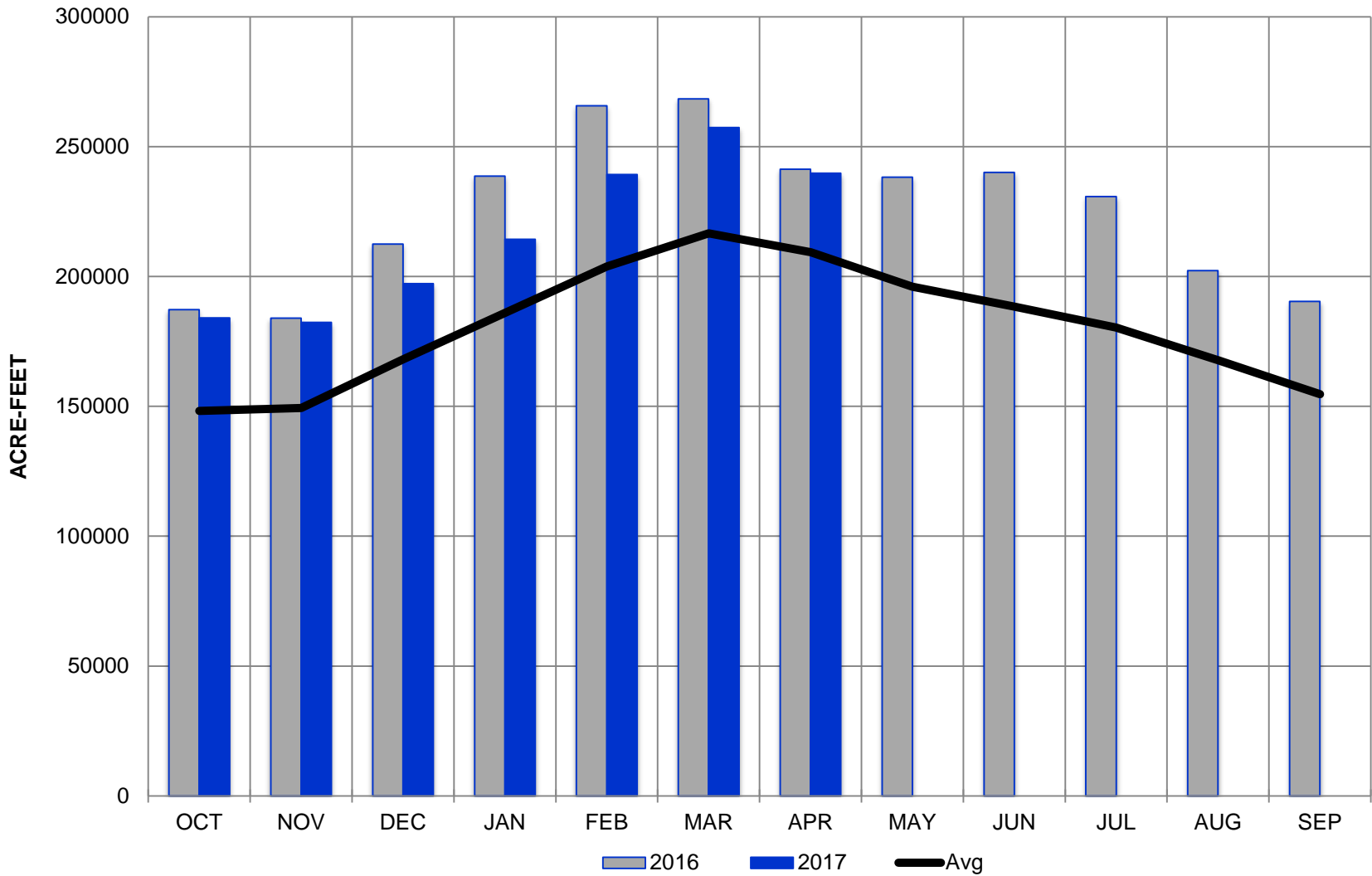
# TURQUOISE LAKE

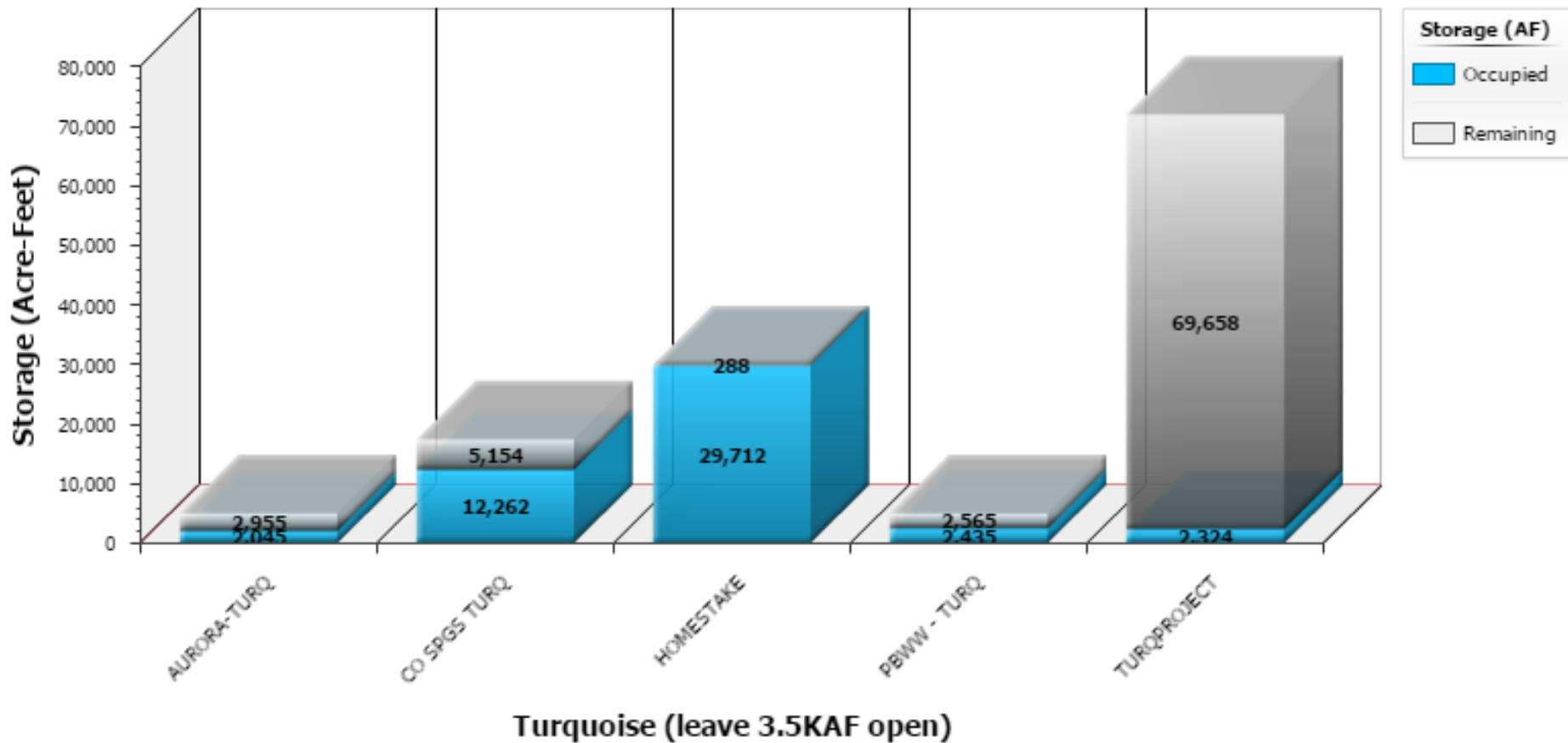


# TWIN LAKES

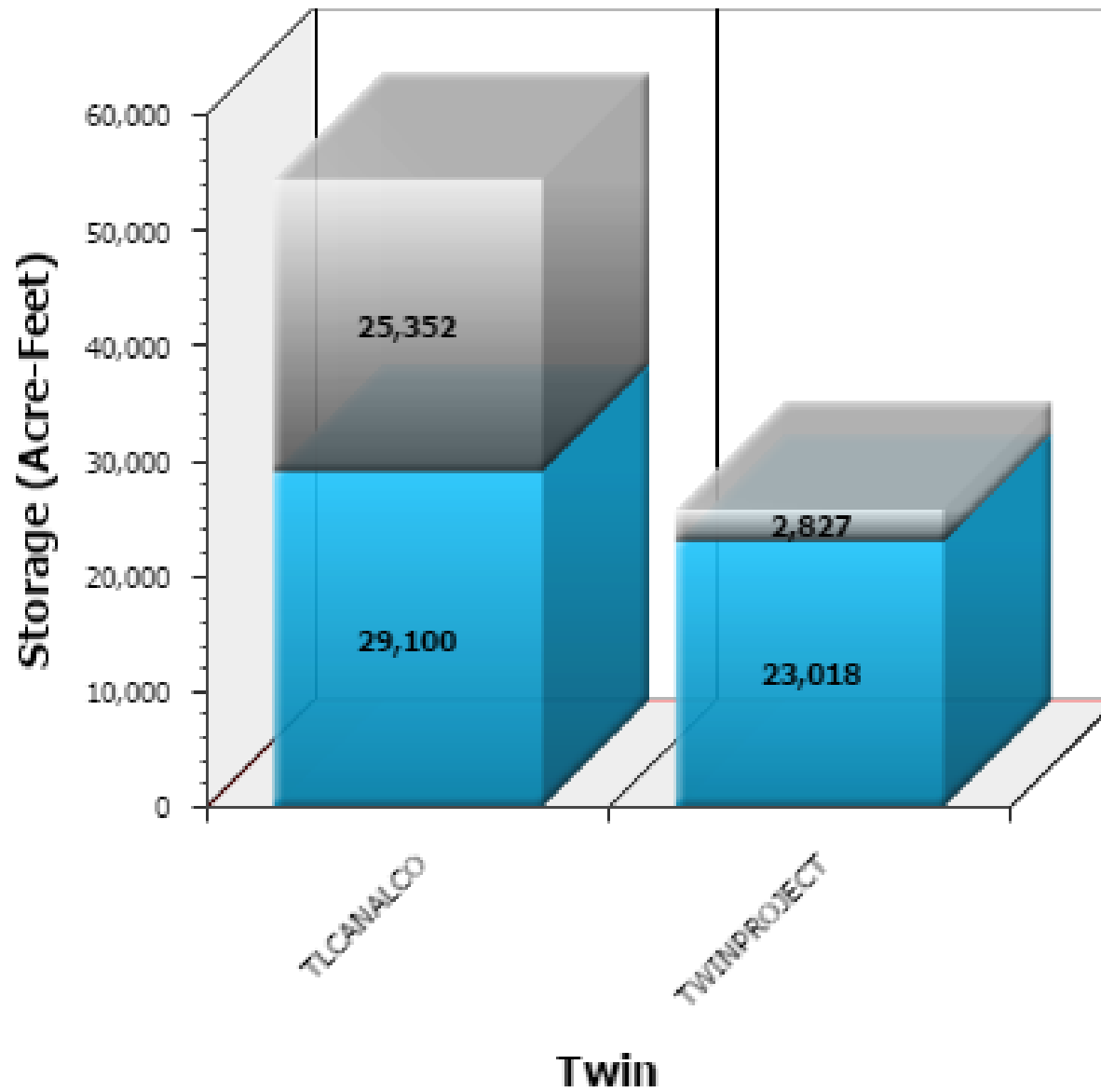


# PUEBLO RESERVOIR

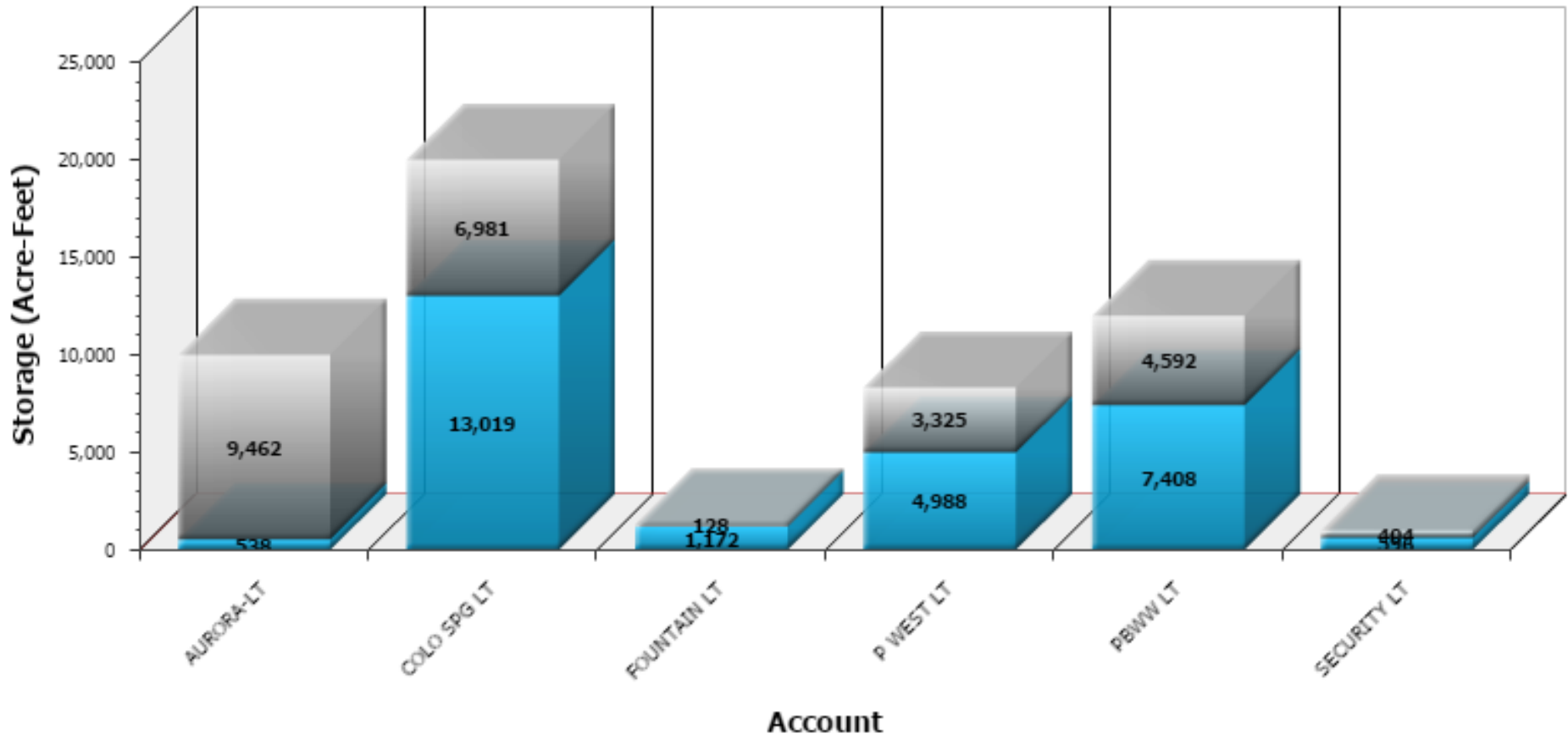




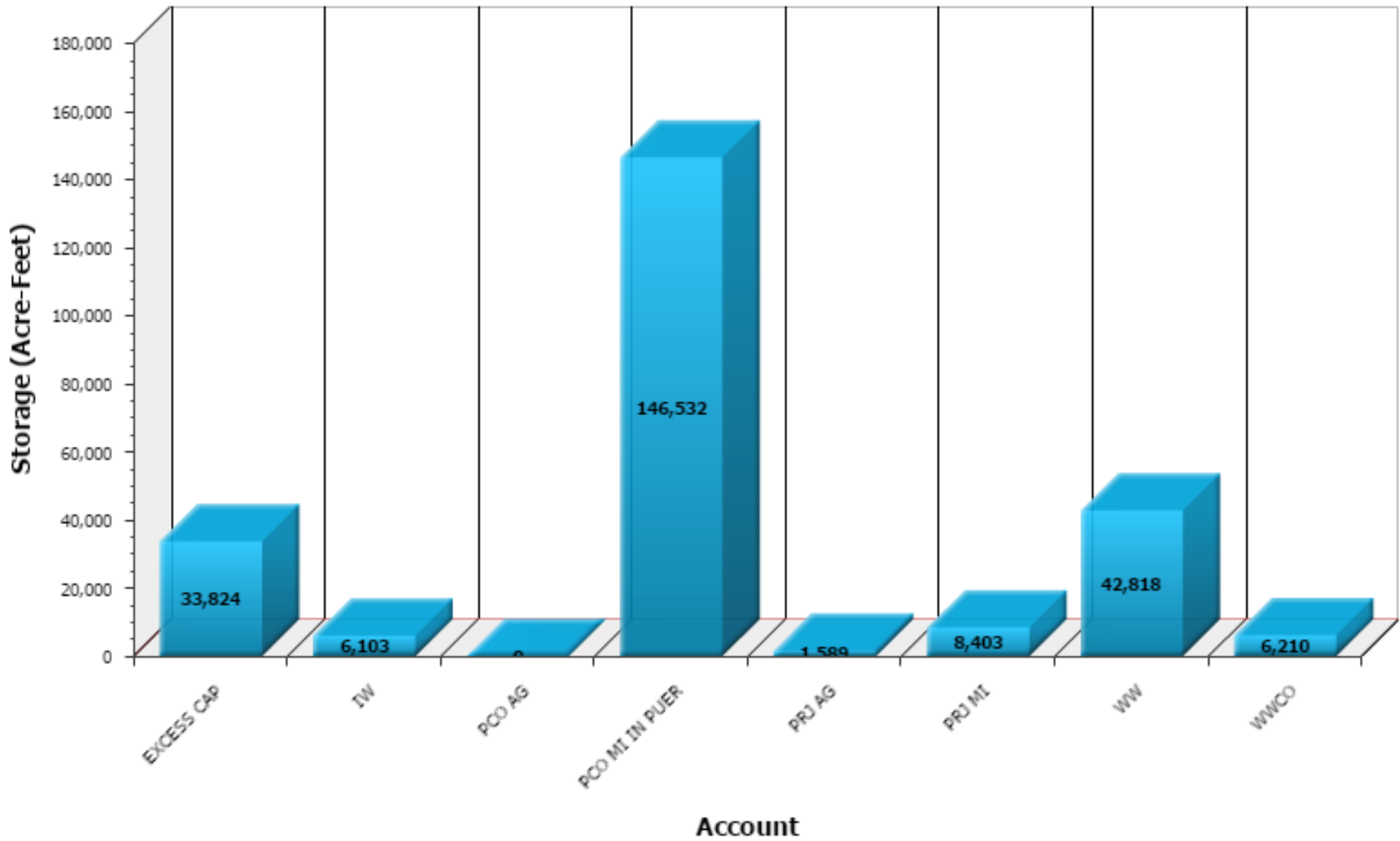
RECLAMATION



RECLAMATION



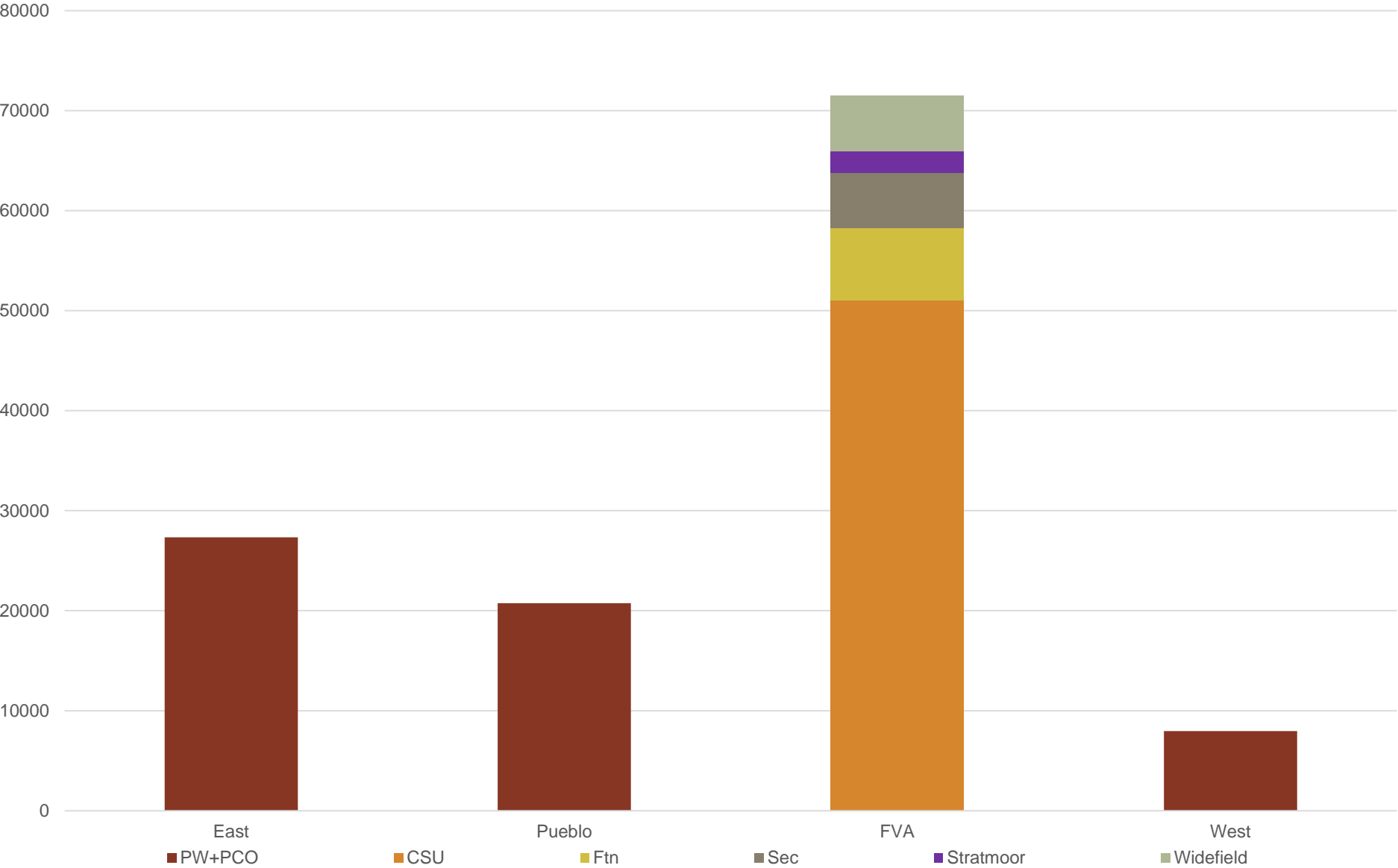
RECLAMATION



RECLAMATION



# First Use Project + PCO Municipal Water



# March 31, 2017

**Total M&I PW in the system = 131,558**

- **EAST = 27,328**
- **WEST = 7,960**
- **PUEBLO = 20,752**
- **OTHER = 4,019**
- **FVA = 71,499**
  - **CSU = 51,021**
  - **Fountain = 7,253**
  - **Security = 5,490**
  - **Stratmoor = 2,144**
  - **Widefield = 5,591**



# RECLAMATION

**As of April 16, 2017**

**Project Reservoirs**

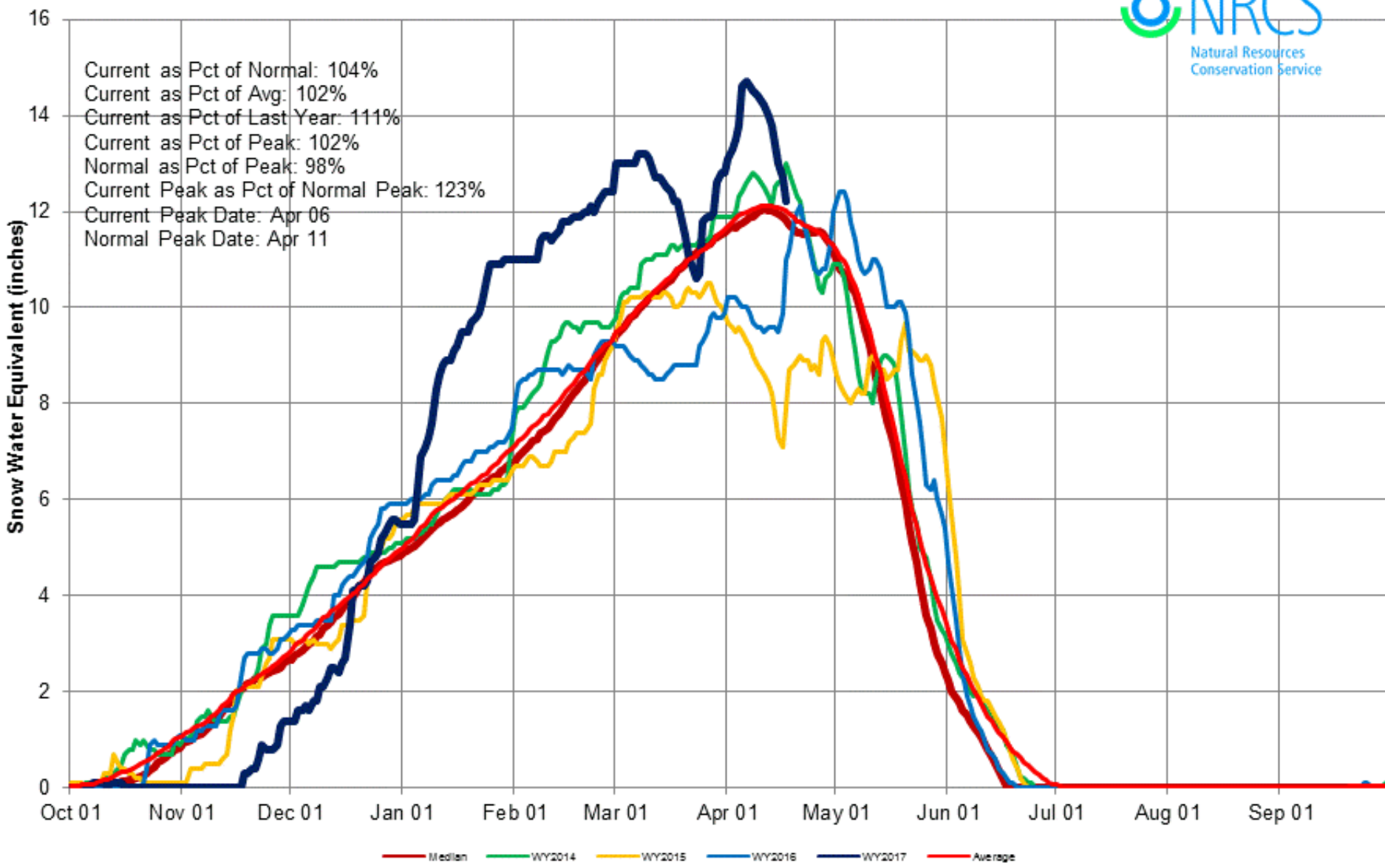
<b>Turquoise</b>	<b>70%</b>
<b>Twin Lakes</b>	<b>105%</b>
<b>Pueblo</b>	<b>122%</b>



**RECLAMATION**

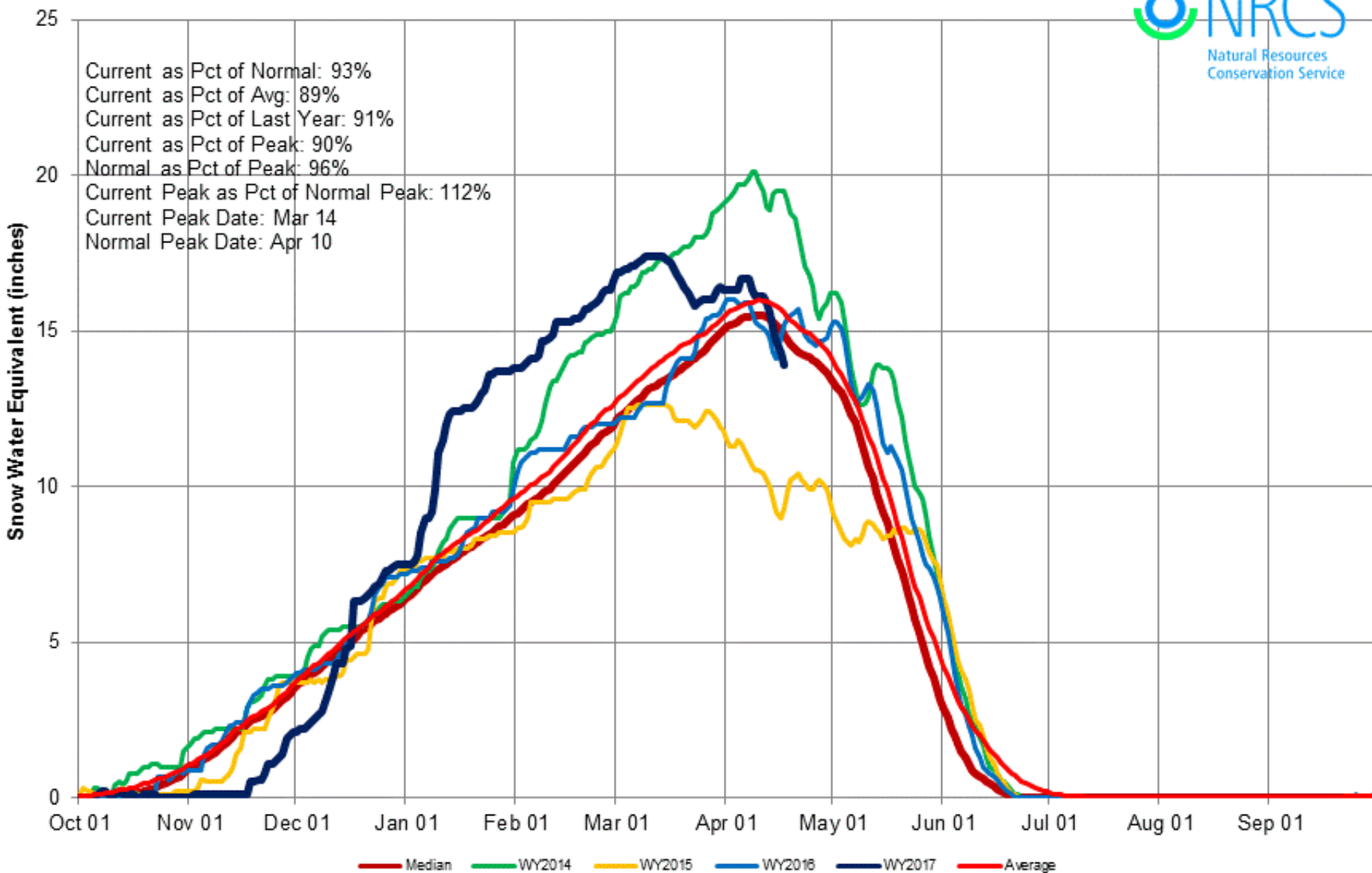
# Arkansas River Basin Time Series Snowpack Summary

Based on Provisional SNOTEL data as of Apr 17, 2017

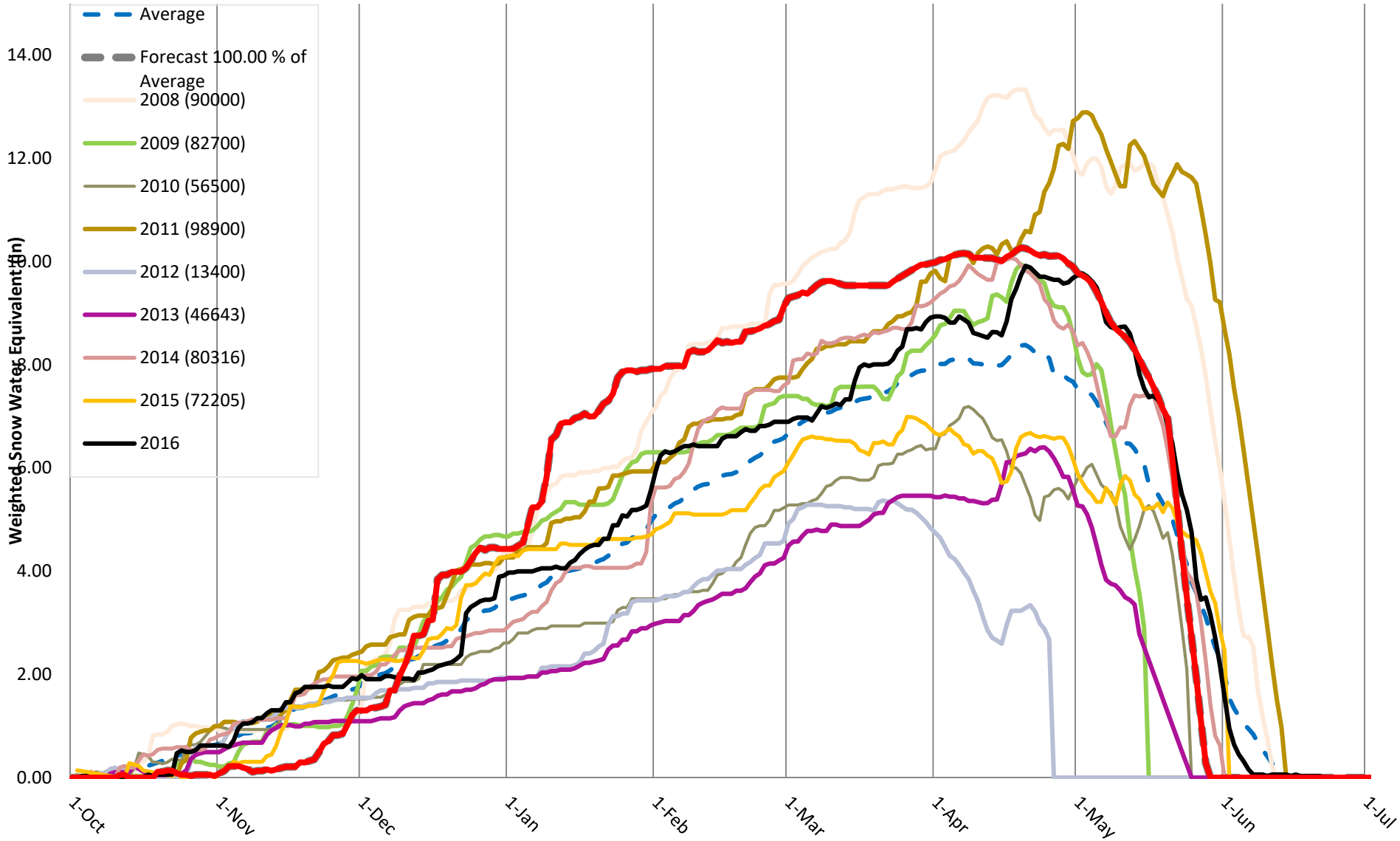


# Upper Colorado River Basin Time Series Snowpack Summary

Based on Provisional SNOTEL data as of Apr 17, 2017



# Fryingpan Weighted by VIPER results





**Forecast**  
**April 1 78,000 a/f**

**RECLAMATION**