

RECLAMATION

Managing Water in the West

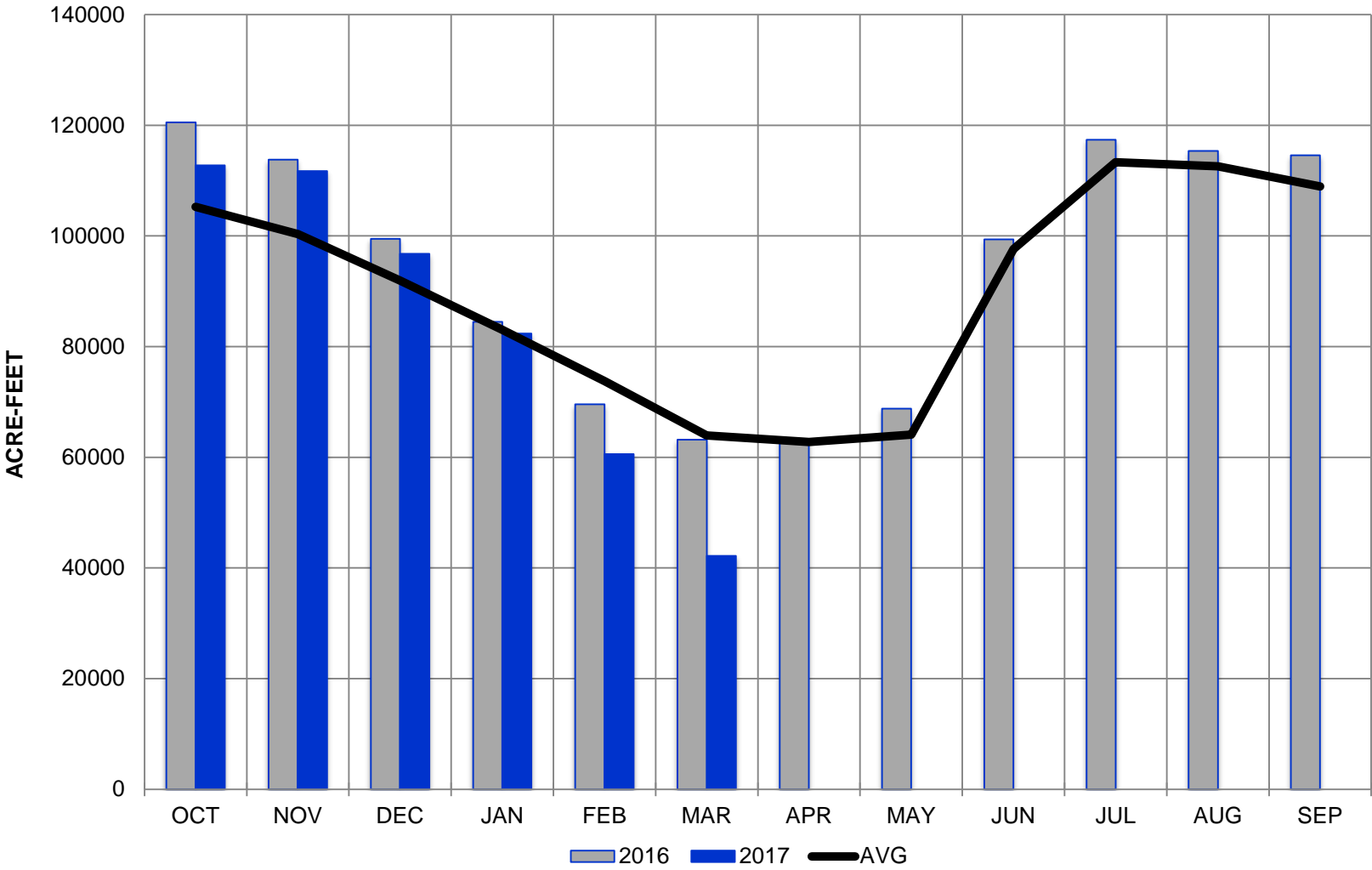
As of March 14, 2017

- 257,309 a/f stored in Pueblo
- 156,276 a/f of Project water
- 39,905 a/f of excess capacity water
- 59,539 a/f of winter water (42,128 and 17,411)
- 89,097 a/f of Project space in Pueblo
- 65,399 a/f of Project space in Twin & Turquoise

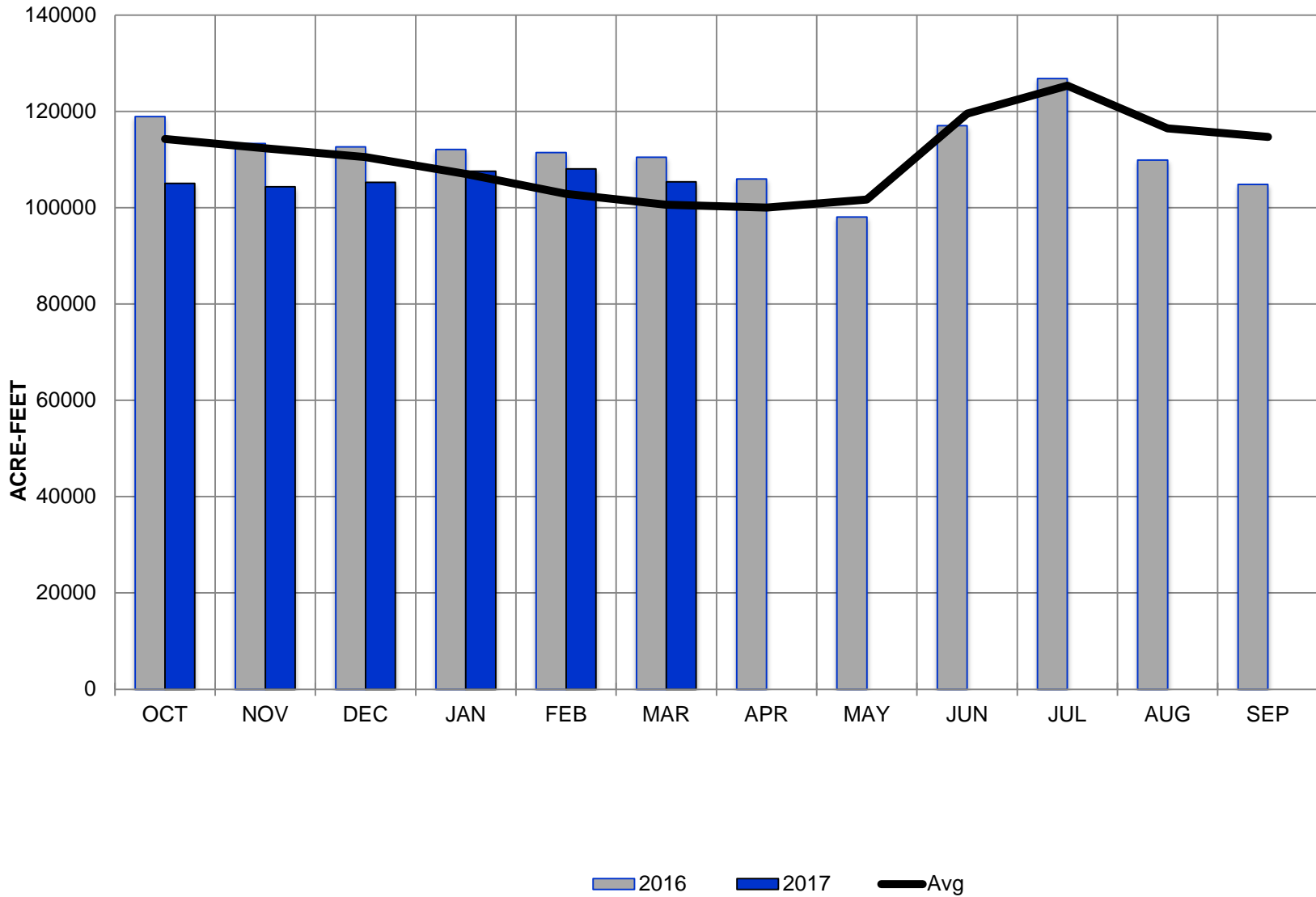


U.S. Department of the Interior
Bureau of Reclamation

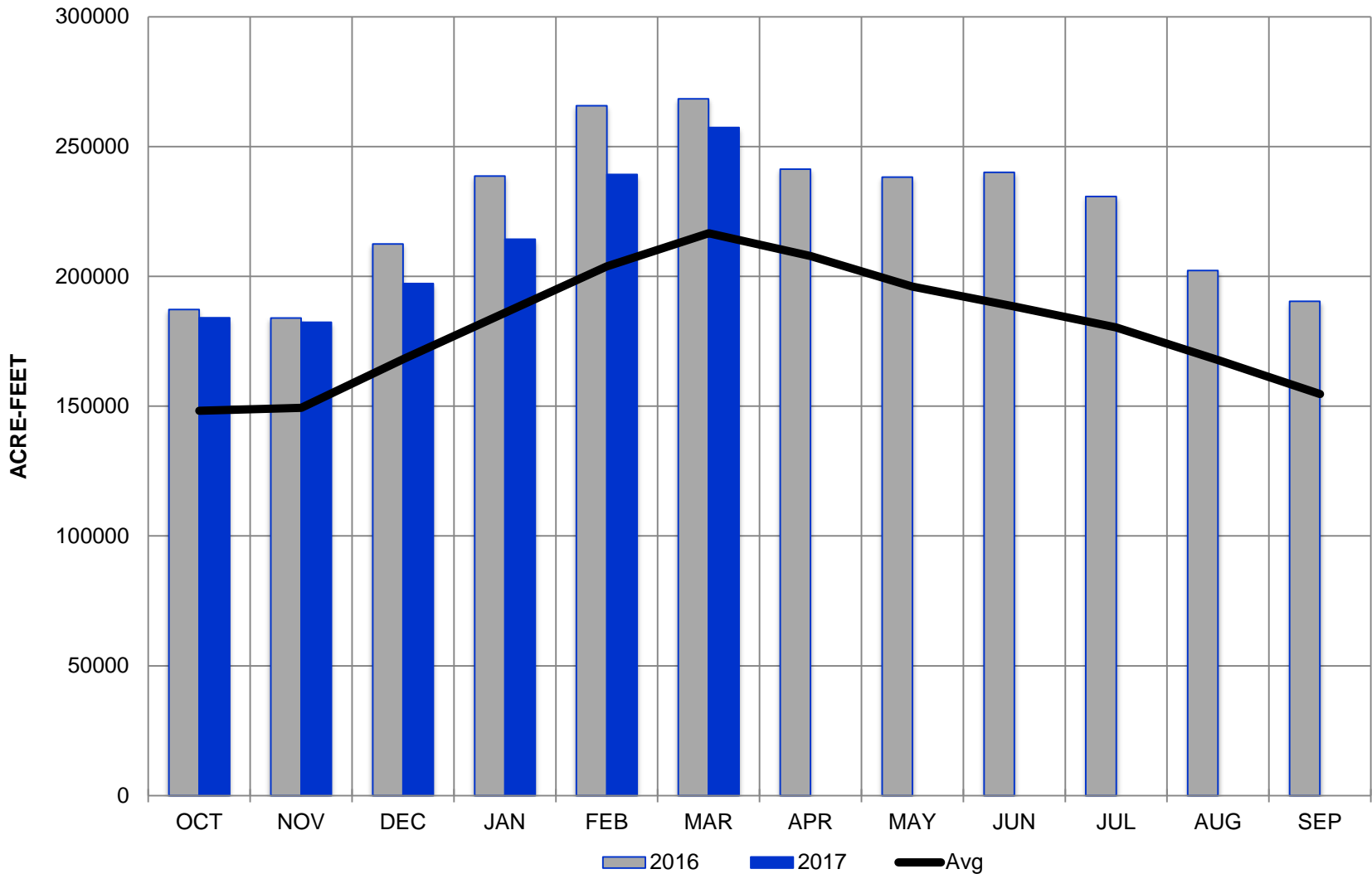
TURQUOISE LAKE

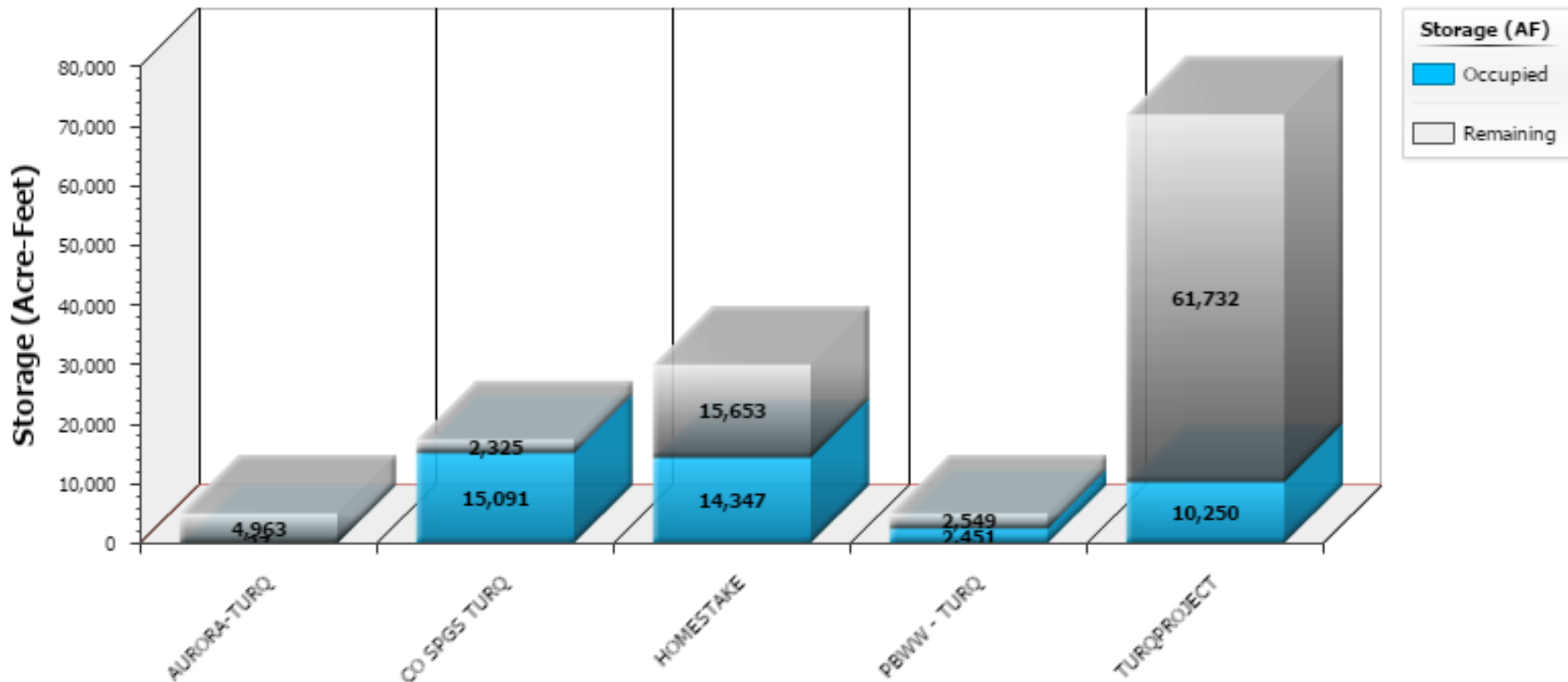


TWIN LAKES



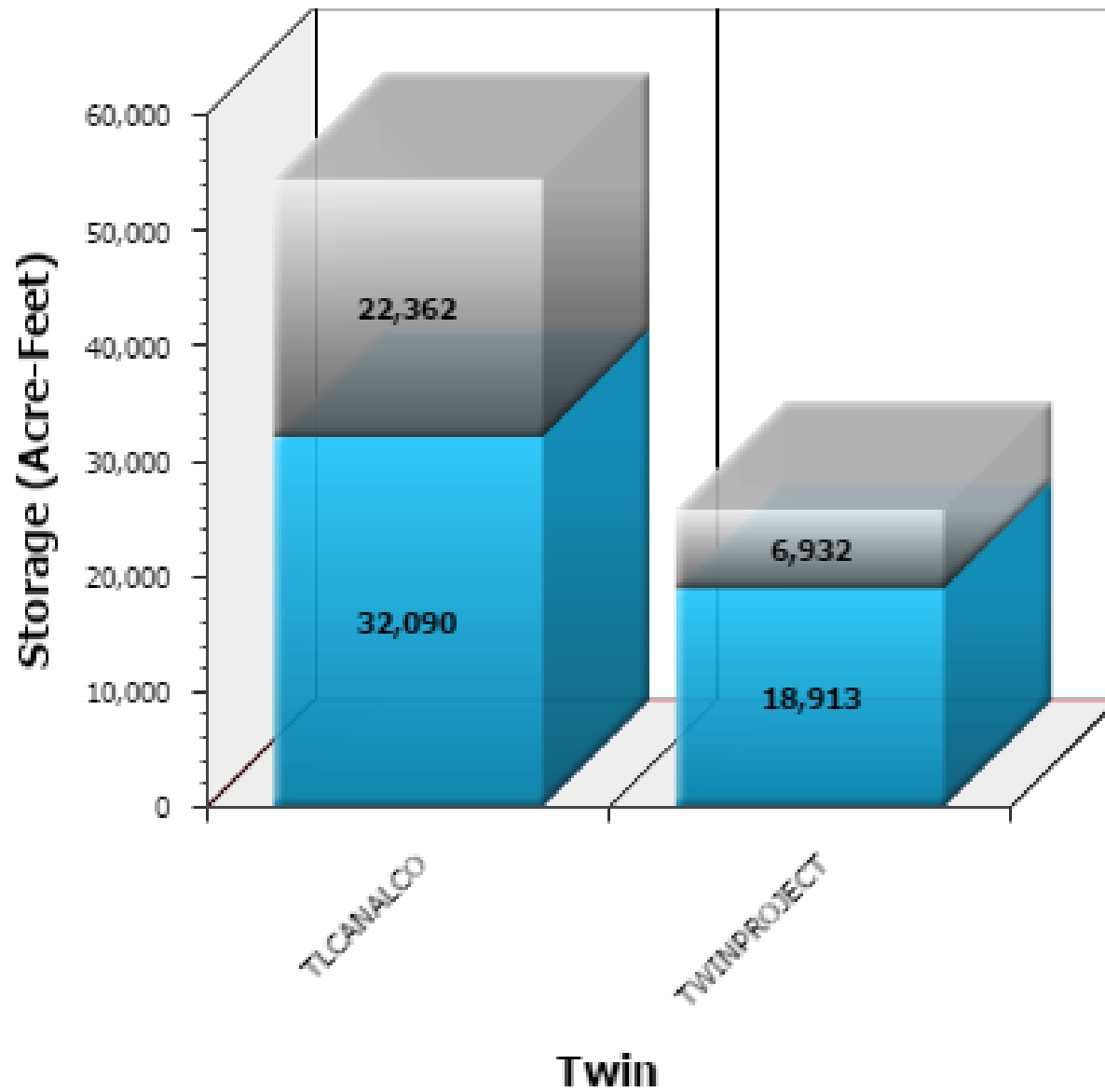
PUEBLO RESERVOIR



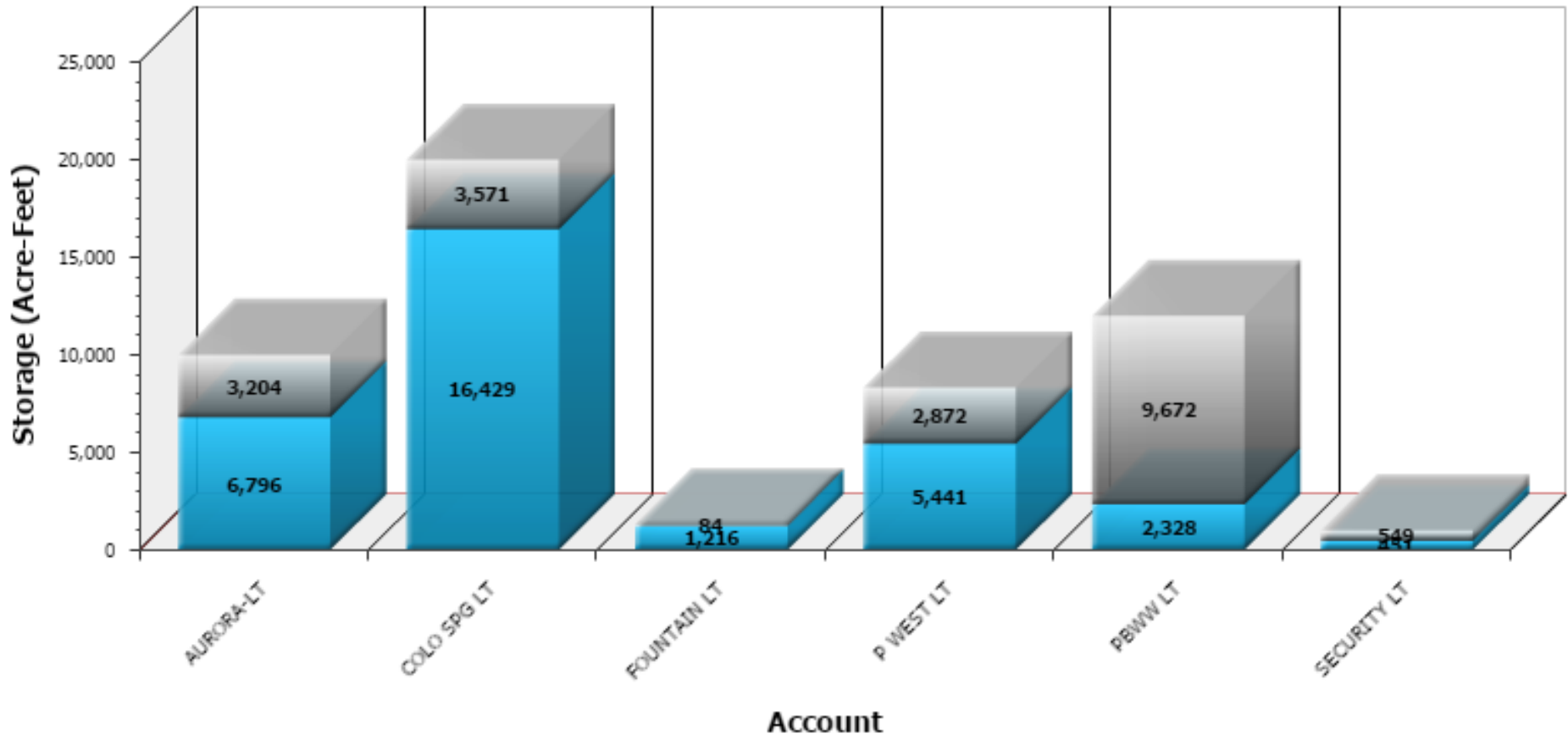


Turquoise (leave 3.5KAF open)

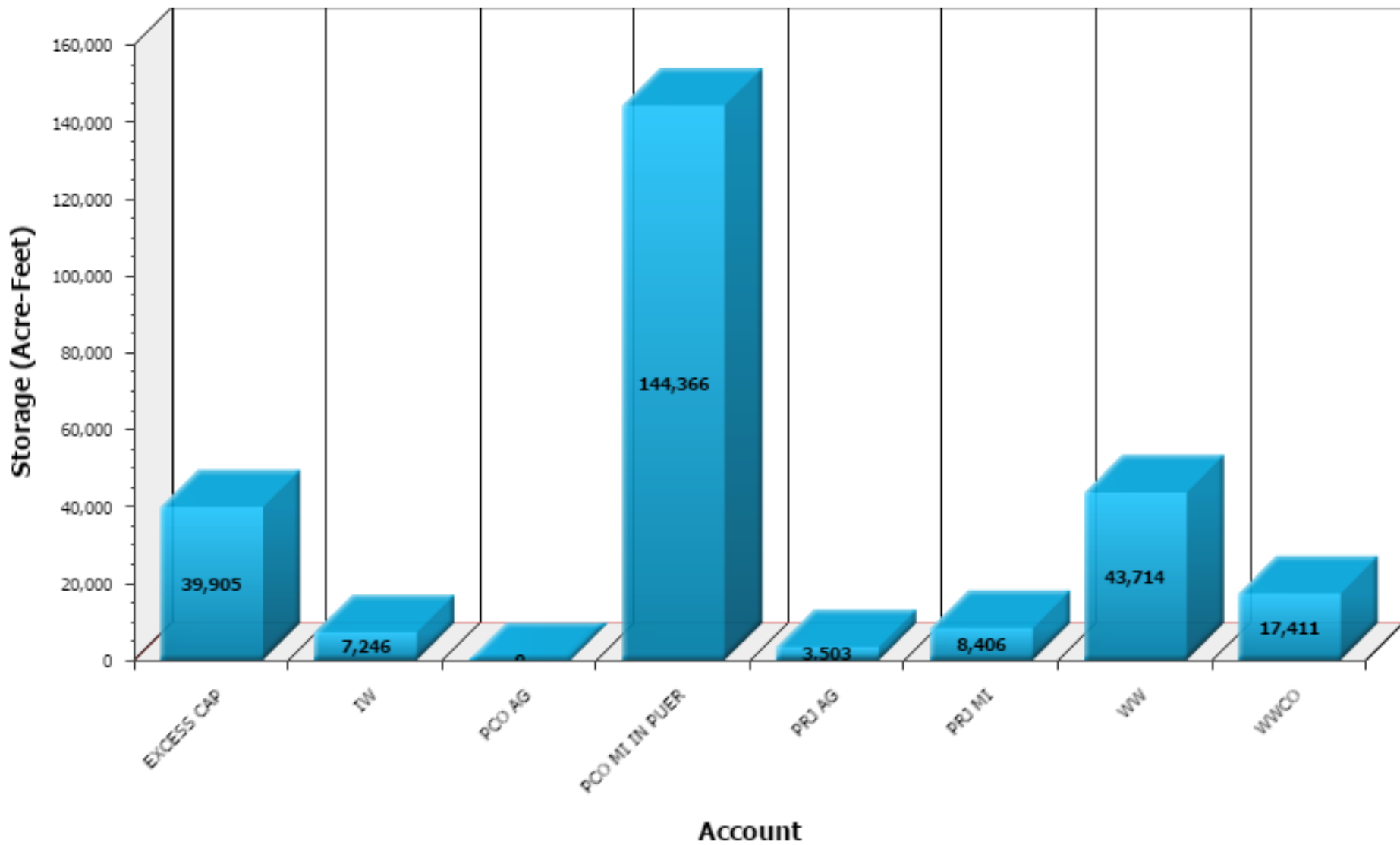
RECLAMATION



RECLAMATION

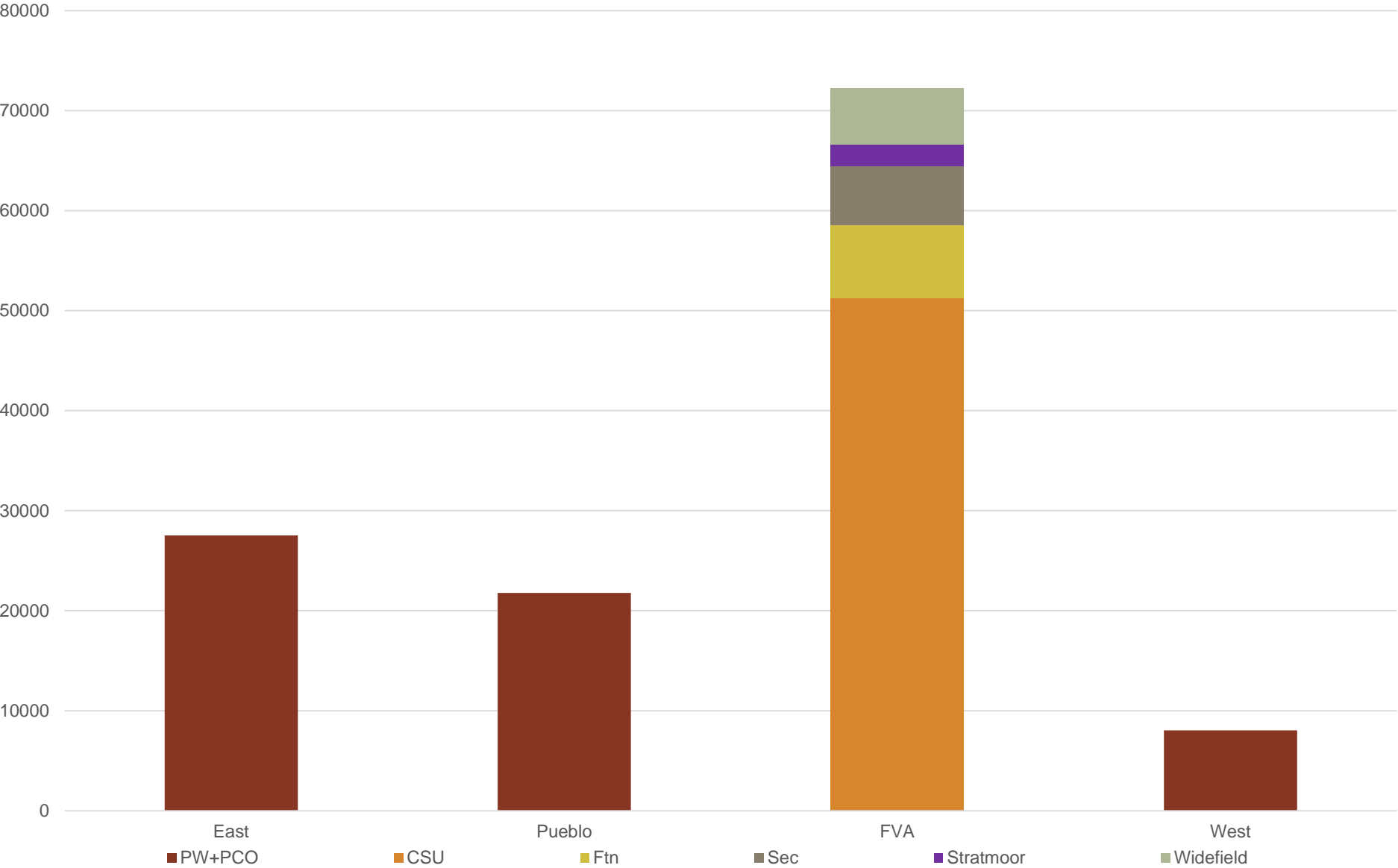


RECLAMATION



RECLAMATION

First Use Project + PCO Municipal Water



February 28, 2017

Total M&I PW in the system = 132,558

- **EAST = 27,536**
- **WEST = 8,045**
- **PUEBLO = 20,860**
- **OTHER = 4,040**
- **FVA = 72,077**
 - **CSU = 51,276**
 - **Fountain = 7,289**
 - **Security = 5,863**
 - **Stratmoor = 2,202**
 - **Widefield = 5,619**



RECLAMATION

As of March 14, 2017

Project Reservoirs

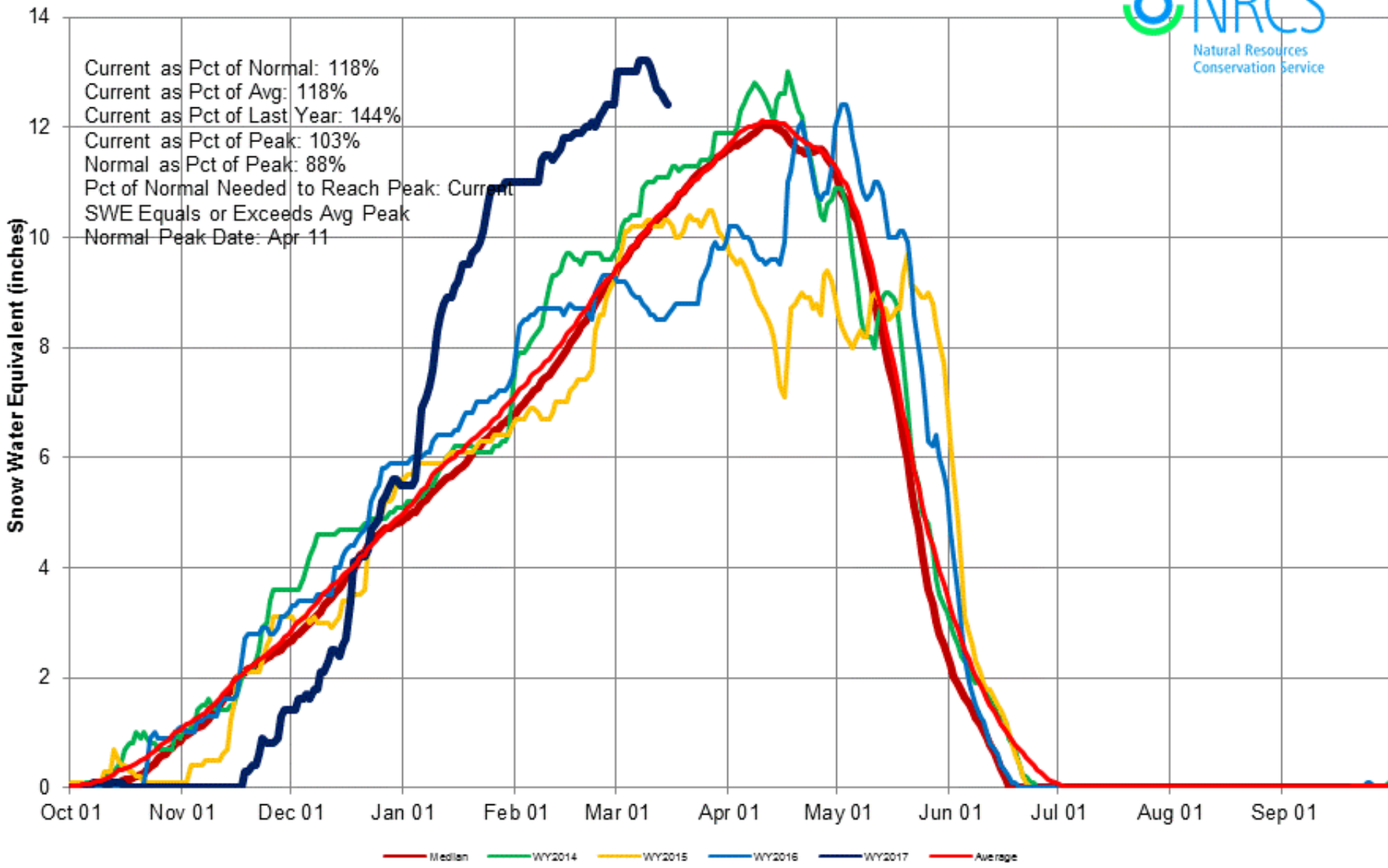
Turquoise	58%
Twin Lakes	103%
Pueblo	127%



RECLAMATION

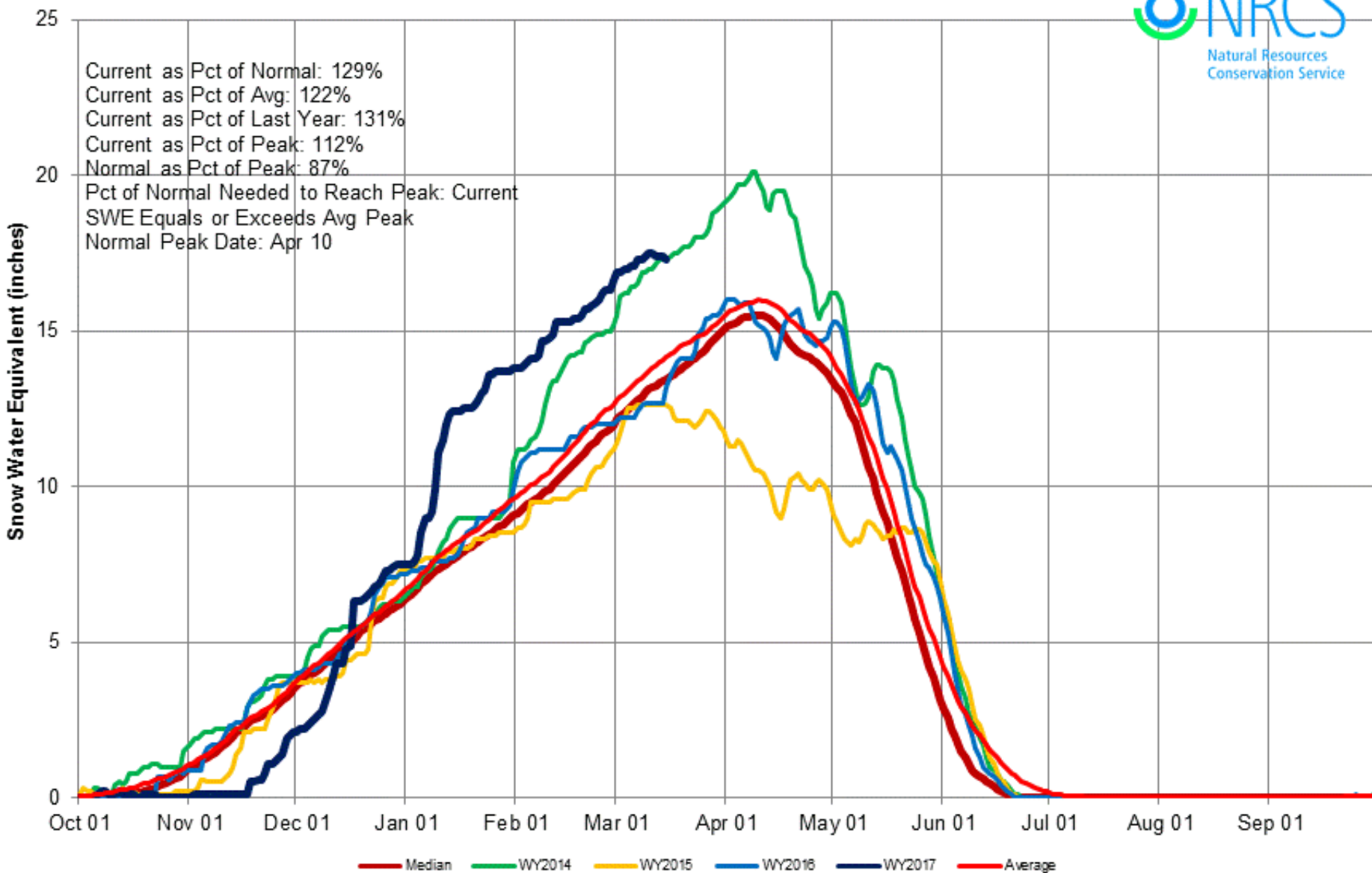
Arkansas River Basin Time Series Snowpack Summary

Based on Provisional SNOTEL data as of Mar 15, 2017

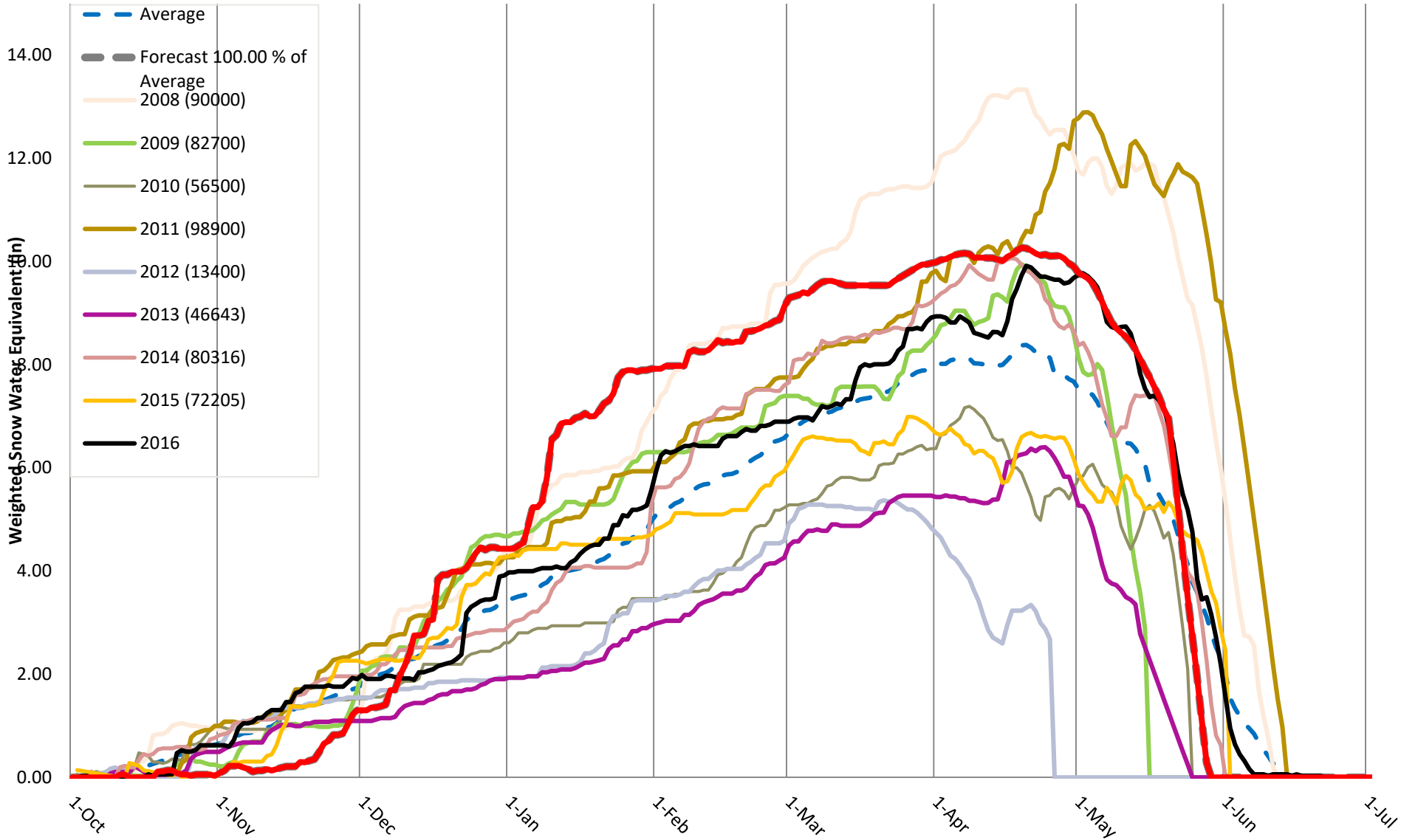


Upper Colorado River Basin Time Series Snowpack Summary

Based on Provisional SNOTEL data as of Mar 15, 2017



Fryingpan Weighted by VIPER results





Forecast
March 14 84,400 a/f

RECLAMATION

As of March 14, 2017

Current Content	257,309	
+ New WW	0	
+ Project Water	8,620	(to 15 Apr)
+ M&I Inflow (est)	4,130	
- Total Releases (est)	18,652	
- Evap (est)	<u>230</u>	
	251,177	- 245,323 = 5,804
- 2016 W.W.	10,411	(after anticipated releases 15 Mar-15 Apr)
- 2016 Ag. Proj. W.	<u>3,503</u>	
	244,269	- 245,323 = -1,054